

A Million Dreams

Arr J Gleadall for CFT Singers

From The Greatest Showman
Pasek Paul

Bass

1 24 25 B

They can say they can say it all sounds cra - zy

29

They can say they can say I've lost my mind

33

I don't care I don't care so call me cra - zy

37

We can live in a world that we de - sign 'Cause

41 C

ev - 'ry night I lie in bed the bright - est co - lours fill

45

my head A mil - lion dreams are keep - ing me a - wake

49

I think of what the world could be a vi - sion of the one

53

I see A mil - lion dreams is all it's gon - na take

57

Oh a mil - lion dreams for the world we're gon - na make.

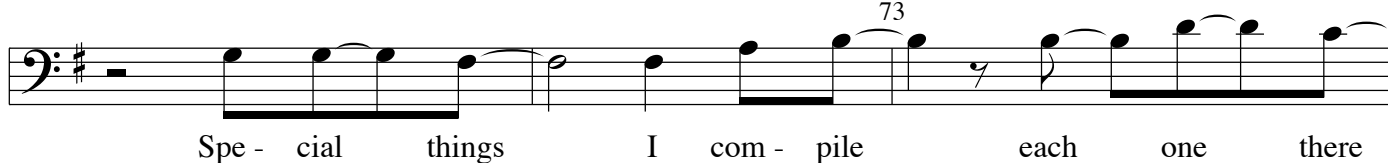
3 D 65

There's a house we can build Ev - 'ry

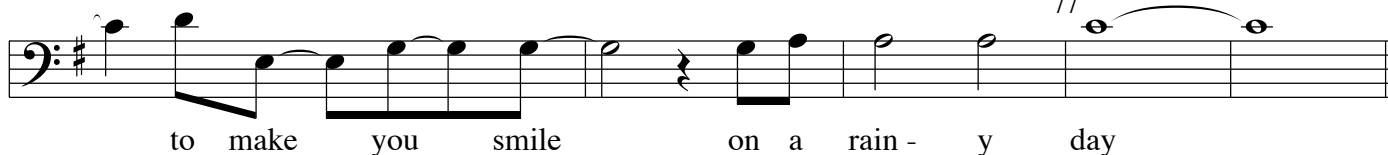
69



73



77



E

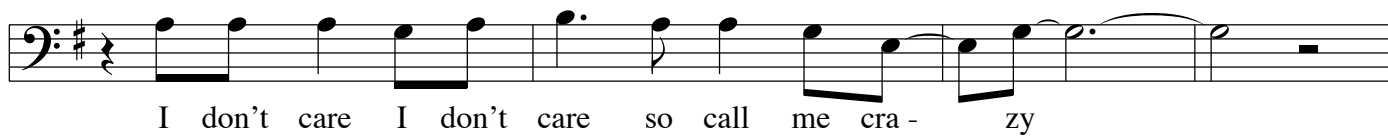
81



85



89



93



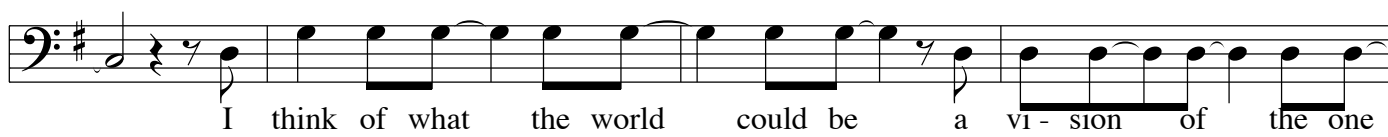
97



101



105



109



113

Oh a mil - lion dreams for the world we're gon - na make.

The image shows a single line of musical notation in bass clef with a key signature of one sharp (F#). The melody consists of the following notes: G2 (quarter), A2 (quarter), B2 (quarter), C3 (quarter), D3 (quarter), E3 (quarter), F#3 (quarter), G3 (quarter), A3 (quarter), B3 (quarter), C4 (half), and D4 (half). The lyrics are written below the notes, with hyphens indicating syllables that span across multiple notes.